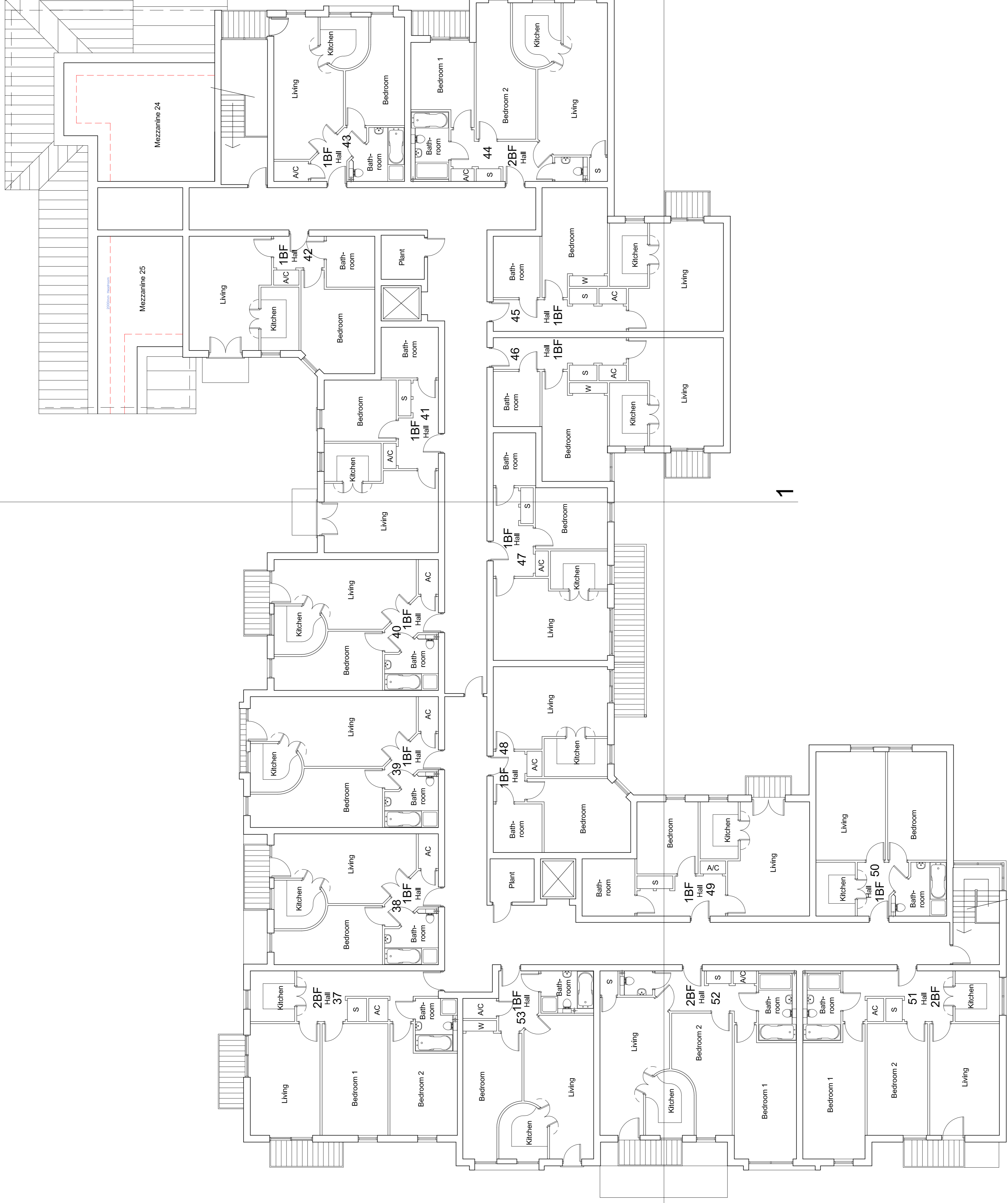


**NOTES:**

1. The contents of this drawing are copyright
2. There is no Apartment 13

ACCOMMODATION SCHEDULE	Ground Floor	First Floor	Second Floor	TOTAL
1 Bedroom Apartments	12	14	13	39
2 Bedroom Apartments	4	5	4	13
Total Apartments	16	19	19	52
Gross Internal Area (sqm)	1417	1401	1374	4192



**SECOND FLOOR PLAN**



- B 06.06.14 2 Flats removed, layout amended
- A 27.02.14 Balcony to Flat 44 removed.

Revisions  
 Rev Date Description  
 By PM

**PLANNING**

Renaissance Retirement Ltd

Project Location: The  
 New Sheltered Apartments  
 Duttons Road, Romsey

**Proposed Second Floor Plan**

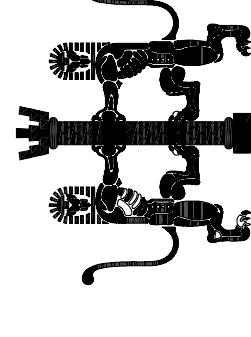
Scale: A1: 1:300  
 Date: 21.11.13  
 Drawing No: ASP.13.035.104

Project No: ASP.13.035.104

ARCHITECTURE - PLANNING - PROJECT MANAGEMENT - COM

Garbur Stott, Steve Collins, T1 Design, Ltd.  
 Castlemead, Lovers, B23 1PZ

01292 472822  
 www.aspirearchitects.co.uk  
 info@aspirearchitects.co.uk  
 © Aspire Architects LLP



Sheet:

B

ARCHITECTURE - PLANNING - PROJECT MANAGEMENT - COM